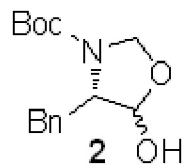


N-[(1,1-Dimethylethoxy)carbonyl]-*N*-hydroxymethyl-*L*-phenylalaninal



¹H NMR (600 MHz, CDCl₃, 50 °C)

7.298
7.286
7.274
7.249
7.228
7.216
7.196
7.184

5.335
5.329
5.118
4.890
4.876

4.064
4.056
4.048
4.040

3.024
2.688
2.672
2.665
2.649

1.543
1.452

0.000

